

Quality and reliability

Welcome to Römer Fördertechnik (RFT)



About us.

Römer Fördertechnik GmbH (RFT) based in Wetter/Ruhr, Germany, is specialized in manufacturing crane and industrial components which find their application in port-, mining-, conveyor and materials handling technology.

Hydraulic buffers, dampers, brakes, couplings, storm brakes, guide rollers, bottom hook blocks, crane wheels and many other products are designed, manufactured, assembled and tested in RFT's own facilities in Germany.

The products feature the highest safety and quality level in the market of materials handling and safety technology.

RFT successfully cooperates with international crane manufacturers, operating companies and consultants.

Combining responsiveness to customers' unique requests with skilled design engineers ensures a cost-effective solution in a short time. This flexibility is supported by an extensive inventory of all standard products.

Customer-specific designs are implemented with minimal effort and are delivered with short lead times. RFT also ensures long-lasting and safe solutions that are efficient for the customer.

Since being founded by Dr. Eng. Roland Römer in 1982, the company has grown to four plants and covers more than 11.100 m².

The large storage area enables quick delivery times.

RFT's products exist in applications across the globe and are installed in the world's leading companies. Professional and competent consultants, quality products and instantaneous shipping of standard parts are firmly anchored in the company concept.

The safety of people, facilities and protection of your system are the highest priority and the company philosophy!

Extensive product range German quality

High protection level

| | | | | |
|---|---|---|--|---|
|  |  |  |  |  |
| Crane buffers PUDZ III | IPS - PATENTED changeover valve | Crane buffers PUDZ III with bellows | Buffers type Cartridge | For storage systems HERKULES II |
|  |  |  |  |  |
| SWD Safety Rope rocker dampers | TSP Deep Sea buffers | Cellular plastic buffers / impact buffers | Drum brakes acc. to DIN 15435 | Disc brakes type RST |
|  |  |  |  |  |
| Band brakes | Caliper safety disc brakes SCFH | Block brakes / Parking brakes | Thrusters type RBL TH I, II, III | Brake drums / - discs |
|  |  |  |  |  |
| Thruster TURBO Control system | Couplings type RKK | NEW: Rail clamp VZFH-HVZ | Rail clamps electrical VZE | Rail clamps type VZFH - NEW system |
|  |  |  |  |  |
| Rail clamps hydraulic VZH | Rail clamps manual VZM | Hook assemblies | Bottom hook blocks | Wheels with guidance system |
|  |  |  |  |  |
| Wheels with wheel flanges | Rope pulleys / sheaves | Synchro travel systems | Guide rollers - PATENTED pads | Telescopic forks |

Extensive product range German quality

High protection level

PRODUCT RANGE:

- Hydraulic buffers / Shock absorbers
- Industrial brakes
 - Drum brakes
 - Disc brakes
 - Caliper safety disc brakes
 - Band brakes
 - Block brakes / Parking brakes
- Control system / Monitoring system for brakes
- Brake drums / Brake discs
- Coupling systems
 - Claw couplings
 - Brake disc couplings
 - Brake drum couplings
- Thrusters acc. to DIN 15435
- Cooling-System for thrusters
- **Thruster TURBO** Control system
- Storm brakes / Rail clamps
 - Manually operated
 - Electrically operated
 - Hydraulically operated
 - NEW: Horizontal execution
(particularly suitable for movable hall roofs/gates)
 - NEW: With lifting and positioning function,
without contact to the rail during normal crane operation
- Guide roller systems
- Synchro travel systems /
Hydraulic wheel block systems
- Bottom hook blocks
- Rope pulleys / Sheaves
- Hook assemblies
- Crane wheels (with or without flange)
- Load handling devices for storage & retrieval systems
Telescopic forks / Push pulling devices

BENEFITS

- Own engineering, production and assembly in GERMANY
- Large product range from a single source
- Extensive stock keeping ensures short delivery times
- Utmost quality and product service life
- Fast, precise and efficient manufacturing with no compromise on quality and safety
- Custom designed solutions per customer requirements
- Tailor made developments, reliable contact persons and knowledgeable support from a single source



Special design German quality

High technical flexibility

RFT offers precisely manufactured products according to your specifications and wishes.

Solutions for individual problems regarding special machine constructions.

Strong experience in:

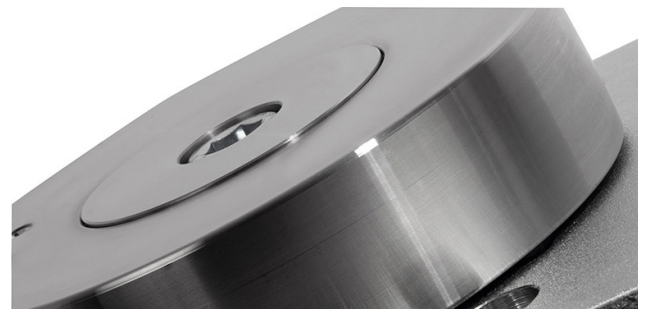
- Engineering / Construction
- Fabrication
- Assembly
- Project Management

RFT offers a full service in the field of steel and metal processing, technology and the know-how for solution of specific application cases.

CNC processing units allow complete processing (turning, milling, grinding, drilling, etc.) of many components.

From the raw material to the finished product, all worksteps out of a single source!

Precise operation.
Optimum results.
Highest quality.
Satisfied customers.
Long-term solutions.



Complete solutions from a single source.

Besides our standard products, our expertise in the industrial marketplace compile customized and efficient solutions for you.

Excellent metal removal quality.
RFT also your partner for special purpose solutions!

RÖMER HISTORY

Experience and knowledge over generations.

The family „Römer“ has been operating in the field of mechanical engineering for many decades.



A significant development that should not be underestimated was created by one of the first well known RÖMER companies called HANNS UND RÖMER, founded 1907.

The company manufactured rolling machines and complete production lines for sweets. One of the most popular developments was the patented production machine for pipe (whistles) lollipops. These lollipops are still available on the global market.

Following his time as an assistant at university, tests and experiments changed into reality and the first plant was launched by Dr. Eng. Roland Römer in 1982.

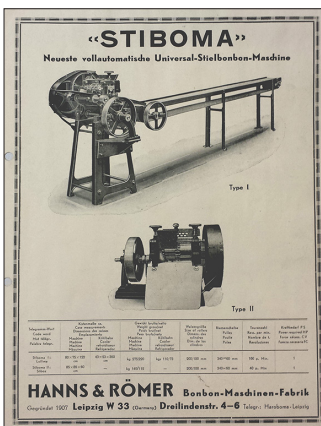
Since being founded, the company “Römer Förder-technik GmbH / RFT has grown to four plants and covers more than 11.000 m². RFT is specialized in crane and industrial components for port-, mining-, convey- or and materials handling technology.

The extensive product range such as hydraulic buffers, dampers, industrial brakes, couplings, storm brakes/rail clamps, guide rollers, bottom hook blocks and crane wheels are designed, manufactured, assembled and tested in RFT's own facilities in Germany.

The products feature the highest safety and quality level in the market of materials handling and safety technology.

RFT's products exist in applications across the globe and are installed in the world's leading companies. Professional and competent consultants, quality products and instantaneous shipping of standard parts are firmly anchored in the company concept.

RFT will be continued also by a Römer family member, Christiane Römer.



The successful family history has been continued by Dr. Eng. Roland Eugen Römer. He started his professional career (self-employed) while studying at the University of Bochum, Germany.